
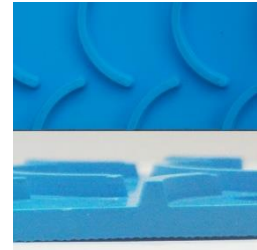
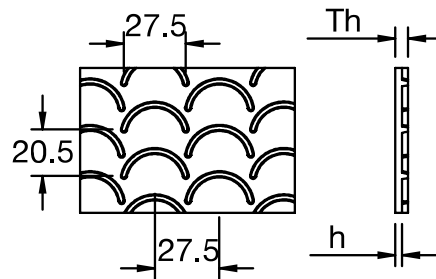


FMB-CT

Flat Belt, Bottom-Smooth, Top-MC (Crescent Top)

| | |
|-------------------------|---|
| Material: | Volta MB |
| Color (Indicative only) | Blue  |
| Hardness: | 95A/46D |
| Temp. Range (C°): | -30°C to 70°C |
| Temp. Range (F°): | -20°F to 158°F |
| Certification: | FDA/ USDA/USDA Dairy/EU Approved |

| | |
|--------------------------------|------|
| Coefficient of friction (Dry): | |
| Steel: | 0.40 |
| Aluminum: | 0.40 |
| Rubber: | 0.50 |
| UHMW: | 0.30 |



| | | |
|--|-------------------------------|-------|
| Product: | FMB-3-CT | |
| Belt Thickness (mm) | 3 | |
| Belt Weight (kg/ m²): | 4.1 | |
| Belt Weight (lb/ ft²): | 0.84 | |
| Belt Min Pulley Diameter (mm)-Normal Flex | 60 | |
| Belt Min Pulley Diameter (mm)-Back Flex | | |
| Belt Min Pulley Diameter (Inch)-Normal Flex | 2 ³ / ₈ | |
| Belt Min Pulley Diameter (Inch)-Back Flex | | |
| Max. Workload (Kg/cm) | 12 | |
| Max. Workload (lb/inch) | 67 | |
| Pull Force* (kg/cm width) at pretension of: | 0.5% | 0.9 |
| | 1% | 1.8 |
| | 1.5% | 2.7 |
| | 2% | 3.6 |
| | 3% | 5.4 |
| Pull Force* (lb/inch width) at pretension of: | 0.5% | 5.06 |
| | 1% | 10.12 |
| | 1.5% | 15.18 |
| | 2% | 20.24 |
| | 3% | 30.36 |
| Electrode Splicing | EVMB 7 | - |
| | EVMB 9 | ✓ |

*Pull force – According to “Temperature Correction Factor”.

| Belt material | Temperature Correction Factor | | | | | | |
|---------------------------|-------------------------------|----------------|----------------|----------------|----------------|----------------|----------------|
| | 40°C/ 104°F | 45°C/ 113°F | 50°C/ 122°F | 55°C/ 131°F | 60°C/ 140°F | 65°C/ 149°F | 70°C/ 158°F |
| MB – 95A/46D Shore | 1 | 0.98 | 0.95 | 0.9 | 0.87 | 0.8 | 0.7 |

- Pull Force relates to Steel pulleys. Multiply given values by 0.9 for Cast Iron, 1.1 for Rubber and 0.8 for wet smooth drums.
- English dimensions have been converted from Metric measurements.
- All values are nominated and to the best of our experience are true and accurate.