
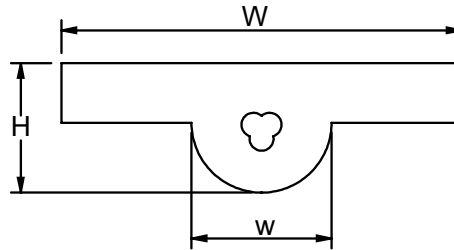


## STBS 3/4

### Special, Reinforced Profile

Material:	<b>Volta TB</b>	
Color (indicative only)	<b>Blue 10</b>	
Hardness:	72A	
Temp. Range (C°):	-40°C to 40° C	
Temp. Range (F°):	-40° F to 104° F	
Certifications:	FDA / EU	

Coefficient of friction:	
Steel:	0.85
Aluminum:	0.85



<b>Product:</b>	<b>STBS 3/4</b>	
<b>Dimensions W (mm):</b>	19.3	
<b>Dimensions H (mm):</b>	5.5	
<b>Dimensions w (mm):</b>	8	
<b>Dimensions W/H (inch):</b>	0.76	
<b>Dimensions H (inch):</b>	0.22	
<b>Dimensions w (inch):</b>	0.31	
<b>Belt Weight (kg/ m):</b>	0.07	
<b>Belt Weight (lb/ ft):</b>	0.047	
<b>Belt Min Pulley Diameter (mm)-Normal Flex</b>	35	
<b>Belt Min Pulley Diameter (Inch)-Normal Flex</b>	1.38	
<b>Max. Workload (Kg)</b>	8.3	
<b>Max. Workload (lb)</b>	18.30	
<b>Pull Force (kg)</b>	0.2%	3
<b>at pretension of:</b>	0.4%	6
<b>Pull Force (lb)</b>	0.2%	6.62
<b>at pretension of:</b>	0.4%	13.23
<b>Splice Type:</b>	Butt Welding	

#### Notes:

1. Pull Force in tables related to Steel & Aluminum pulleys.
2. Multiply given values by 0.7 for wet pulleys.
3. Dimensions have been converted from metric measurements.
4. All values are nominal and to the best of our experience are true and accurate.